



– auf dem Weg zum Teleskop

Klaus Meisenheimer

1. PANIC in a nutshell
2. Integration and Verification @ MPIA
3. Optical quality
4. From the Lab to the telescope
5. Next steps



in a nutshell

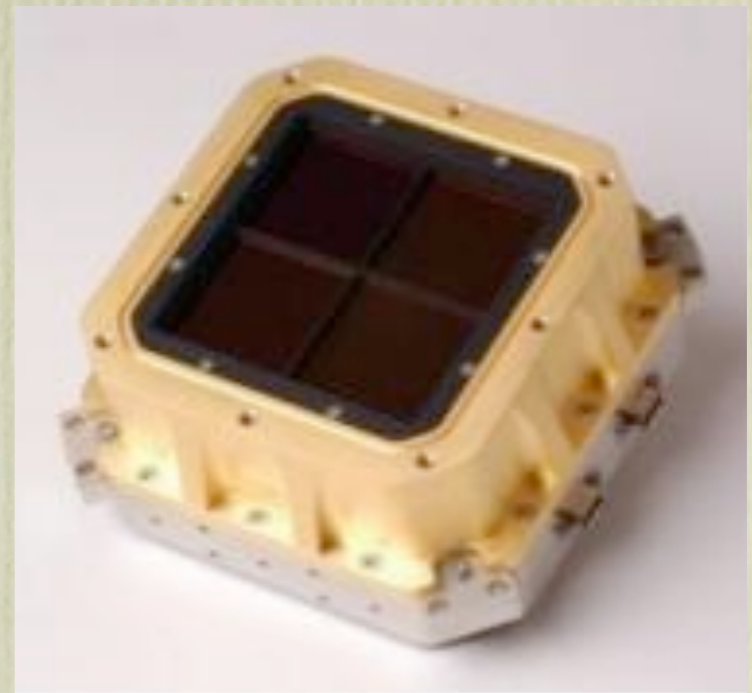
2 x 2 Hawaii-2RG detectors

pixelsize: $18\mu\text{m}$

full-well: 260000 e-

RON: 18 e-

focal reducer: $f/8 \rightarrow f/4$ (2.2m)

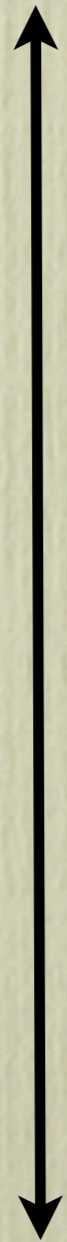




in a nutshell

@ 2.2m

32 arcmin



2048 px

2048 px



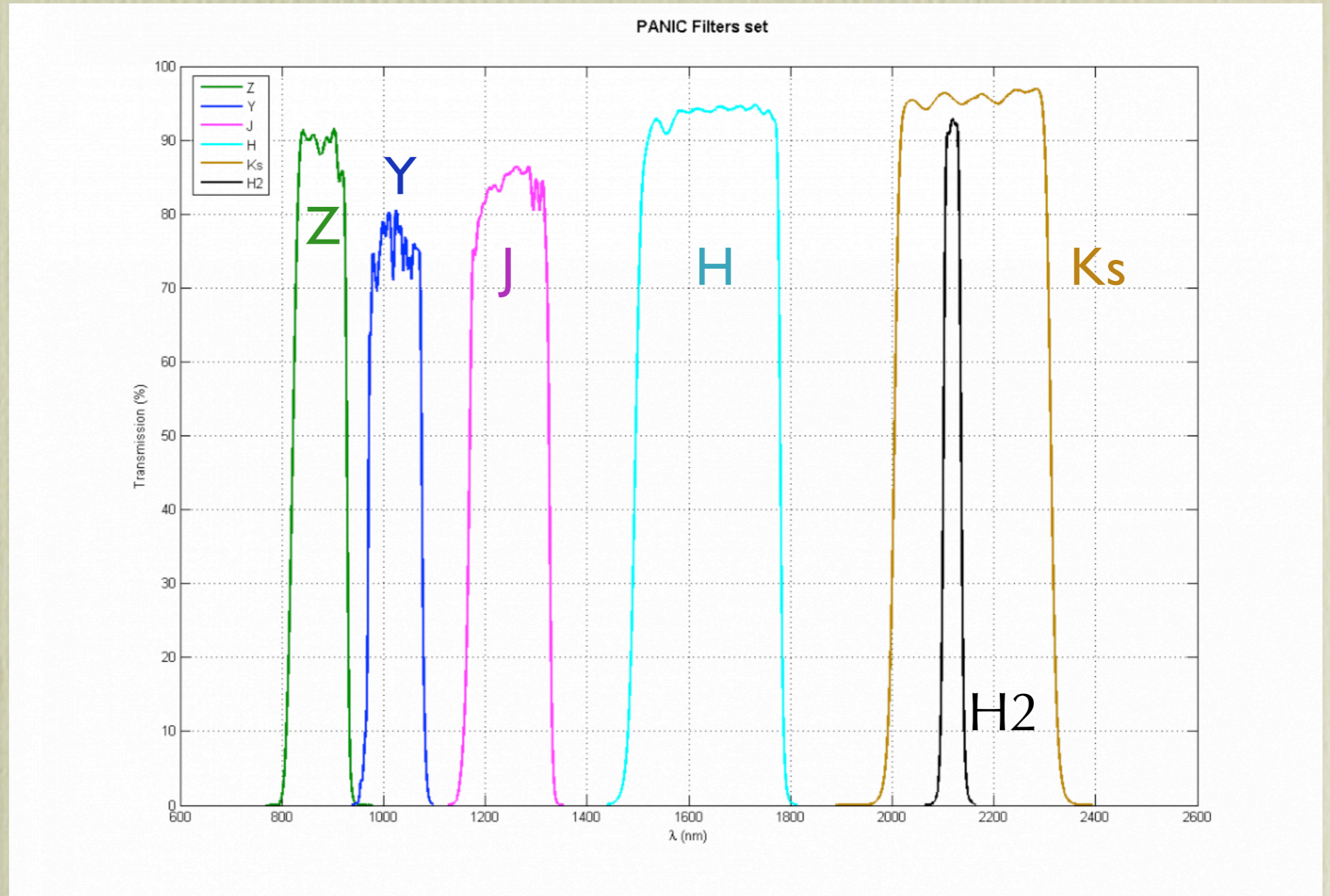
1 px = 0".45

167 px = 75"



in a nutshell

Filter:





integration & verification

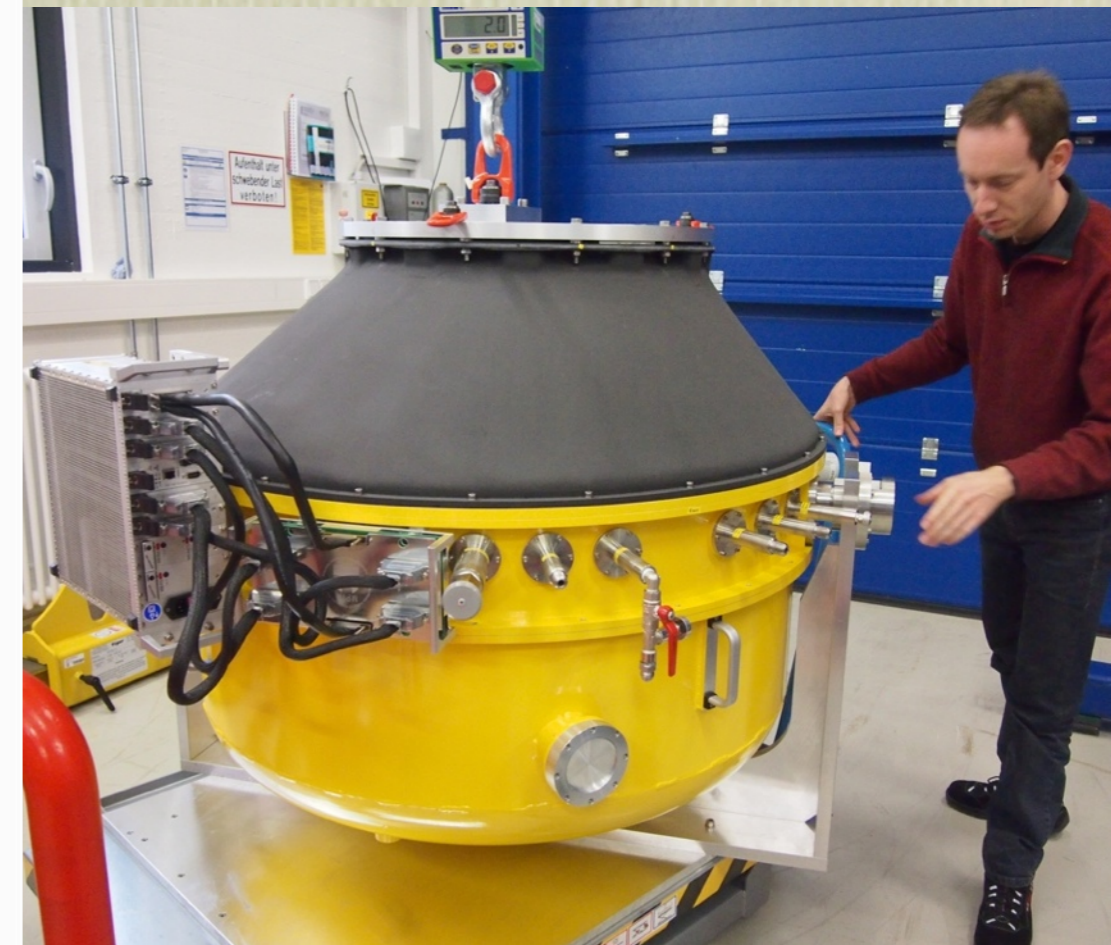
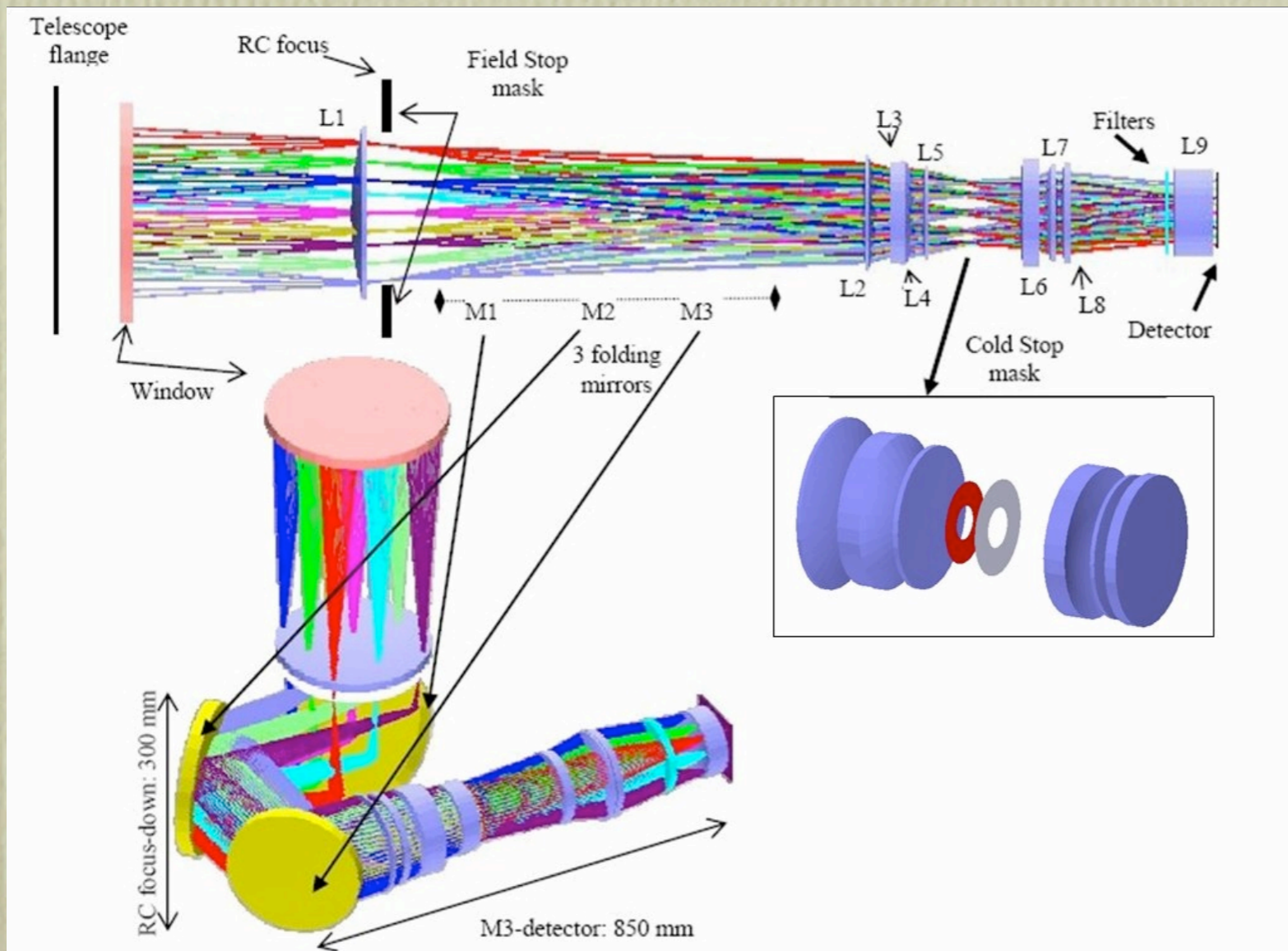
Team:

Matthias Alter, Peter Bizenberger, Bernhard Dorner, Patrick Fopp,
Armin Huber, Werner Laun, Ulrich Mall, Richard Mathar,
Johana Panduro, Ralf-Rainer Rohloff

Conchi Cardenas Vasquez, Irene Ferro Rodriguez

Lead: Matilde Fernandez (IAA), K.M., (Josef Fried)

integration & verification





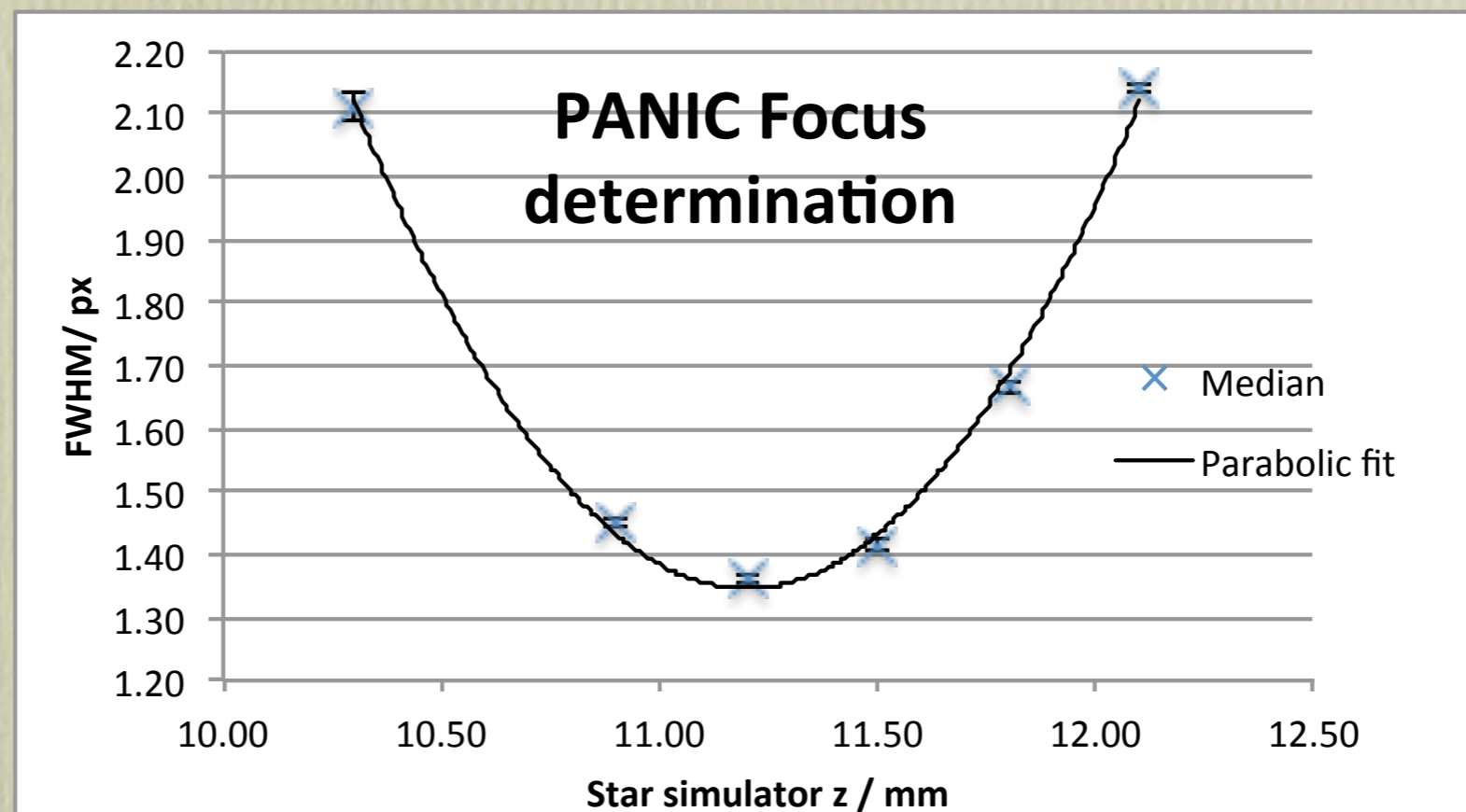
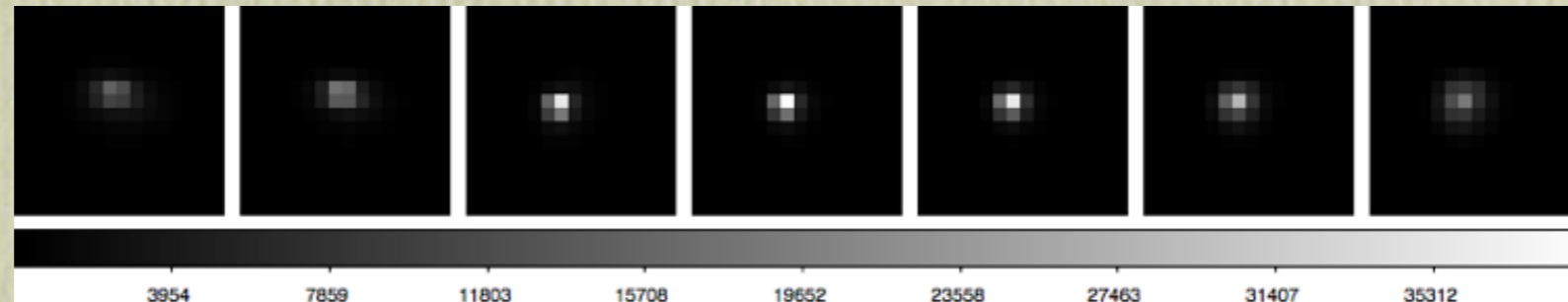
integration & verification

*Optics test with
Star Simulator*



Irene & Conchi (from IAA)

Optical Quality





on its way to the telescope

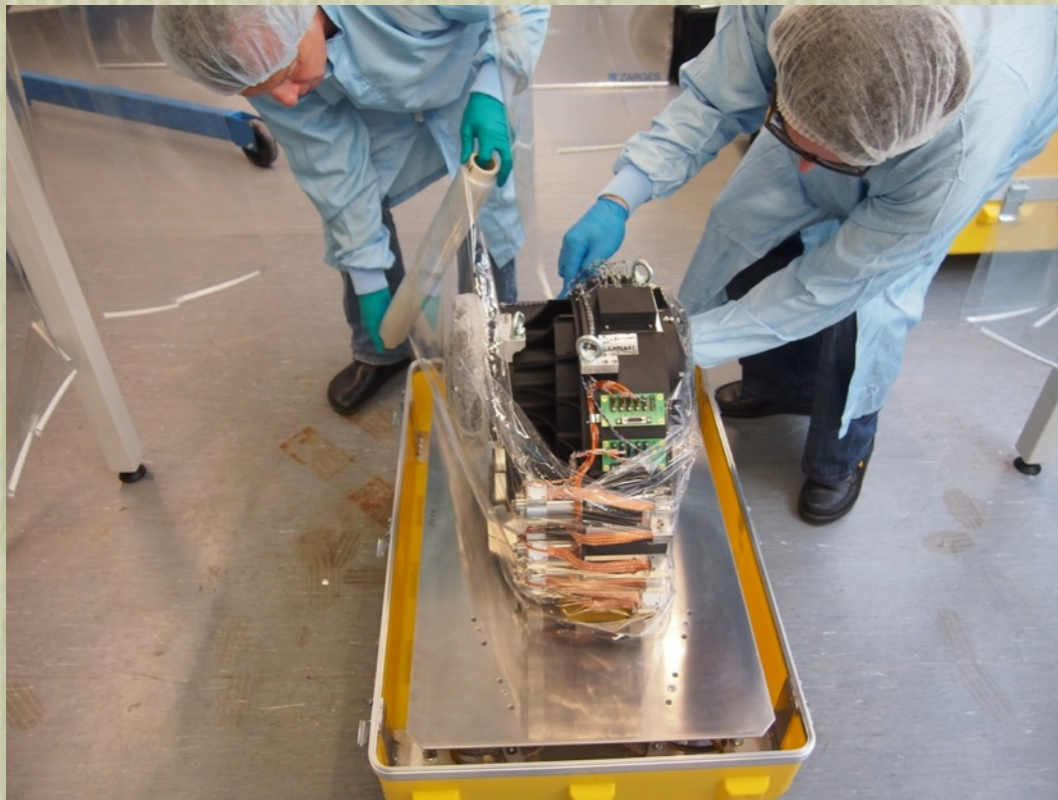
Step 1: from Lab into boxes





on its way to the telescope

Step 1: from Lab into boxes





on its way to the telescope

Step 2: send to Calar Alto by truck





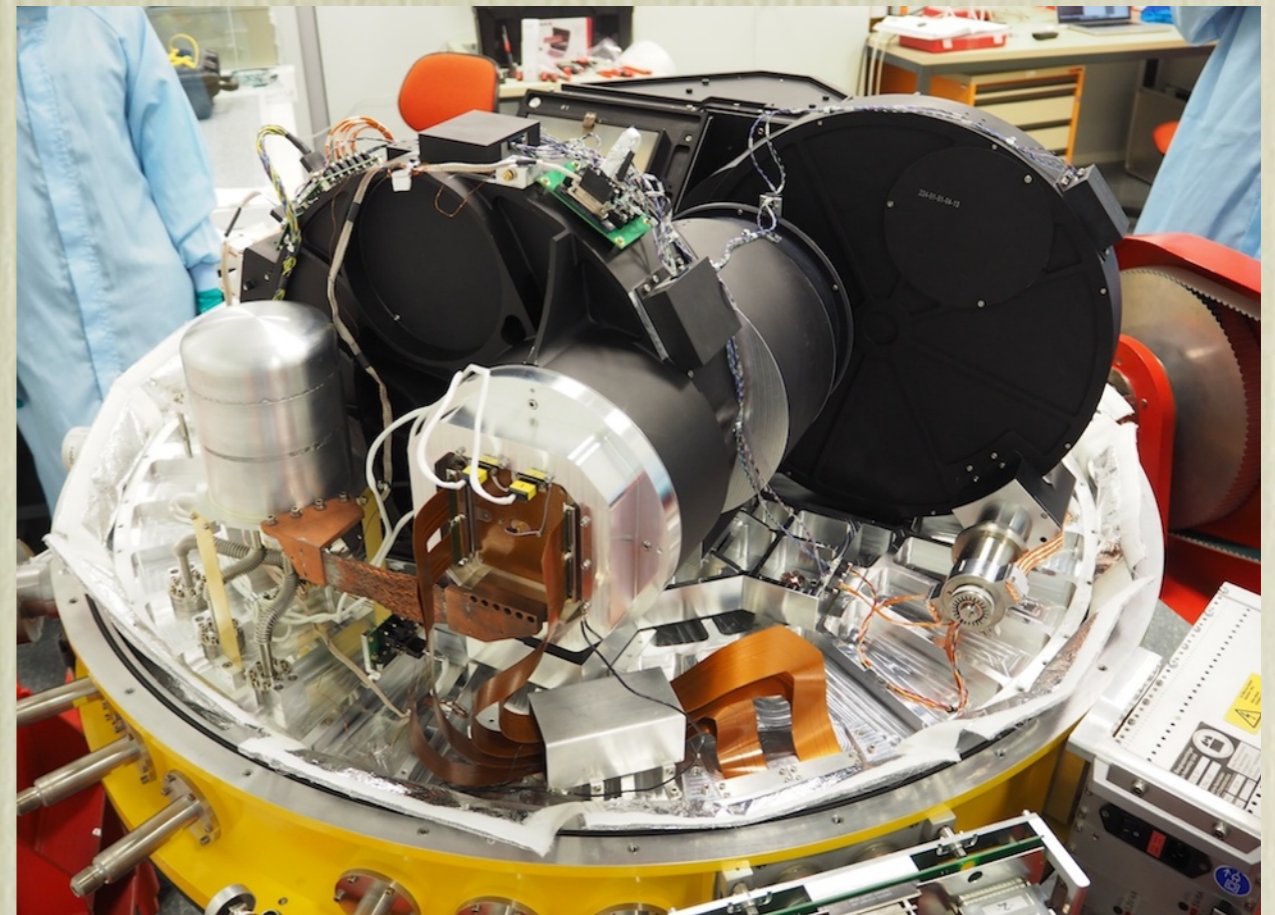
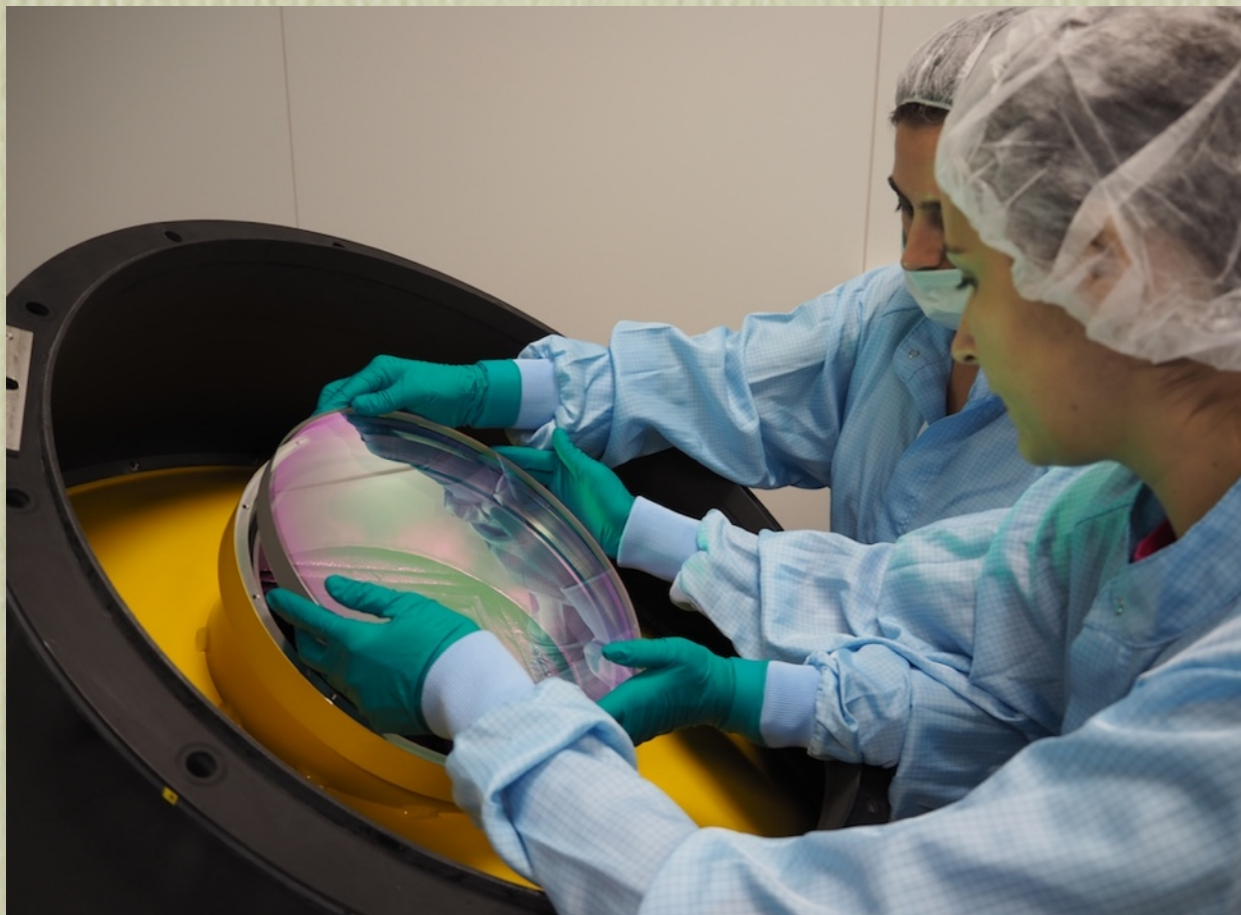
on its way to the telescope

Step 3: unpack on Calar Alto



on its way to the telescope

Step 4: re-assemble and start system





on its way to the telescope

Step 4: re-assemble and start system





on its way to the telescope

The next steps:

- evacuate and cool down now → Fr, Oct 24
- verify optics with star simulator → Fr, Oct 31
- detector characterization Mo, Nov 3
- move to 2.2m telescope Nov, 4
- mount to telescope and connect Nov, 5
- **FIRST light** Nov, 5/6
- Commissioning Nov, 6 -- Nov, 11

Projects for



- **North Polar Cap:** CANIS = J band at $\delta > 60^\circ$
- **Medium deep YJHK at NEP** (Euclid reference)
- **Outflows seen by shocked H2**
Milky Way, nearby galaxies
- **B γ , red-shifted Pa α Line Emission** in galaxies
- **Deep NIR imaging** of nearby galaxies
- and many more ...